

## Inventory Set Up

---

Supernu POS provides multi-level inventory controls with different complexities to meeting different customers demand.

In many cases, Inventory Control for restaurants can extremely time-consuming and complex due to the complexity of the menus and other factors.

We create the simple Inventory Module for restaurants who just want to track the basic and simple inventory for items that can be sold as retail items such as pre-packaged drinks, desserts, chips, etc. Most of these items have bar codes and can be sold as a whole without being made from recipes.

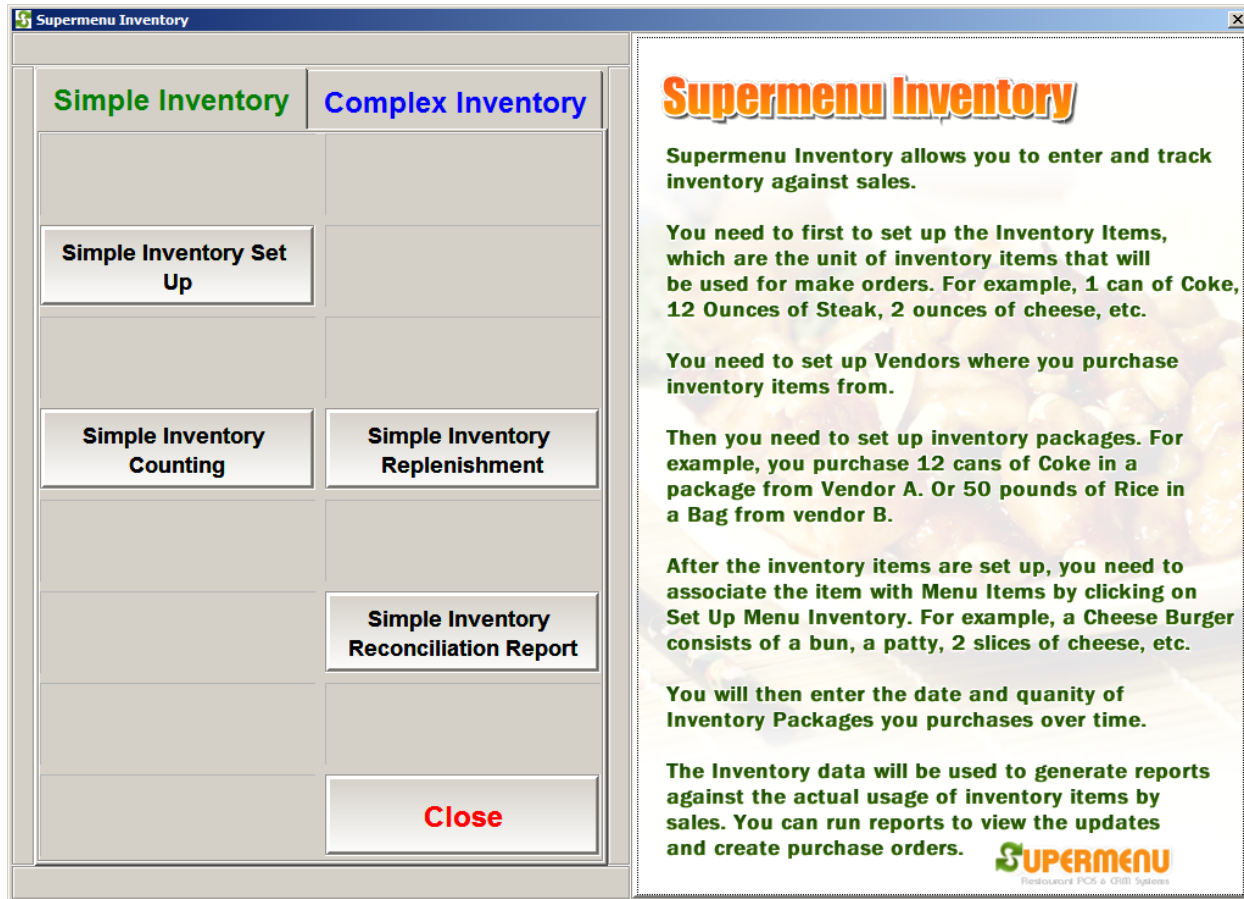
To enable Inventory, you need to first go to All Other Set Up to change Inventory flag to Y. Please note inventory tracking required much more system resources of the server, so we do suggest you have at least 2G of memory on the server for the inventory.

## Simple Inventory

---

For simple Inventory tracking, this first thing is the identify Inventory Categories, which contains items that do not need recipes, such as drink, liquor, dessert, etc.

You go to the Simple Inventory Screen (From main, then Inventory, then Simple Inventory), then click on Simple Inventory Set Up:



The following screen will appear and you check or uncheck the categories that you want to track inventory:

Category	Enabled Inventory Tracking
Appetizer	<input type="checkbox"/>
Soup	<input type="checkbox"/>
Yen's Special	<input type="checkbox"/>
Beef	<input type="checkbox"/>
Pork	<input type="checkbox"/>
Chicken	<input type="checkbox"/>
Lunch Rice & Noodle	<input type="checkbox"/>
Lunch Combo	<input type="checkbox"/>
Seafood	<input type="checkbox"/>
Vegetable	<input type="checkbox"/>
Fresh Juice	<input type="checkbox"/>
Fried Rice	<input type="checkbox"/>
Lo Mein	<input type="checkbox"/>
Tea	<input checked="" type="checkbox"/>
Drinks	<input checked="" type="checkbox"/>
n's Special *For Special Days Only*	<input type="checkbox"/>
Wine	<input checked="" type="checkbox"/>

Close All Close

After the inventory categories are specified, you can perform simple inventory counting and simple inventory replenishment track.

To perform Simple Inventory Counting, click on Simple Inventory Counting button, the following screen will appear:

Exit	Timecard	No Sale	Orders	Refresh	Money Drop	Gift & Loyalty	License	Help	Minimize
------	----------	---------	--------	---------	------------	----------------	---------	------	----------

**Inventory Counting**

Undo

1 Budweiser	3.95
1 Sprite	1.95
1 Budweiser	3.95
1 Sprite	1.95
1 Coke	1.95
1 Sprite	1.95
1 Budweiser	3.95
1 NASA	3.00
1 Kirin	4.25
10 Budlight	39.50

SCAN

ENTER

REPEAT

Complete

Cancel

Wine

Drinks

Tea

Coke

Sprite

Budweiser

NASA

Diet Coke

Kirin

Budlight

It is a very similar screen to the order screen, in which you can add items to the counting using click or bar code scanning. When you are done, click on Complete to complete the counting.

Simple Inventory Replenishment is very similar to Simple Inventory Counting,

Exit	Timecard	No Sale	Orders	Refresh	Money Drop	Gift & Loyalty	License	Help	Minimize
------	----------	---------	--------	---------	------------	----------------	---------	------	----------

### Inventory Replenishment

Undo

1	Sprite	1.95
2	Budweiser	7.90
1	Sprite	1.95
1	Coke	1.95
2	Sprite	3.90
4	Budweiser	15.80

SCAN

ENTER

REPEAT

Complete

Cancel

Wine

Drinks

Tea

Coke

Sprite

Budweiser

NASA

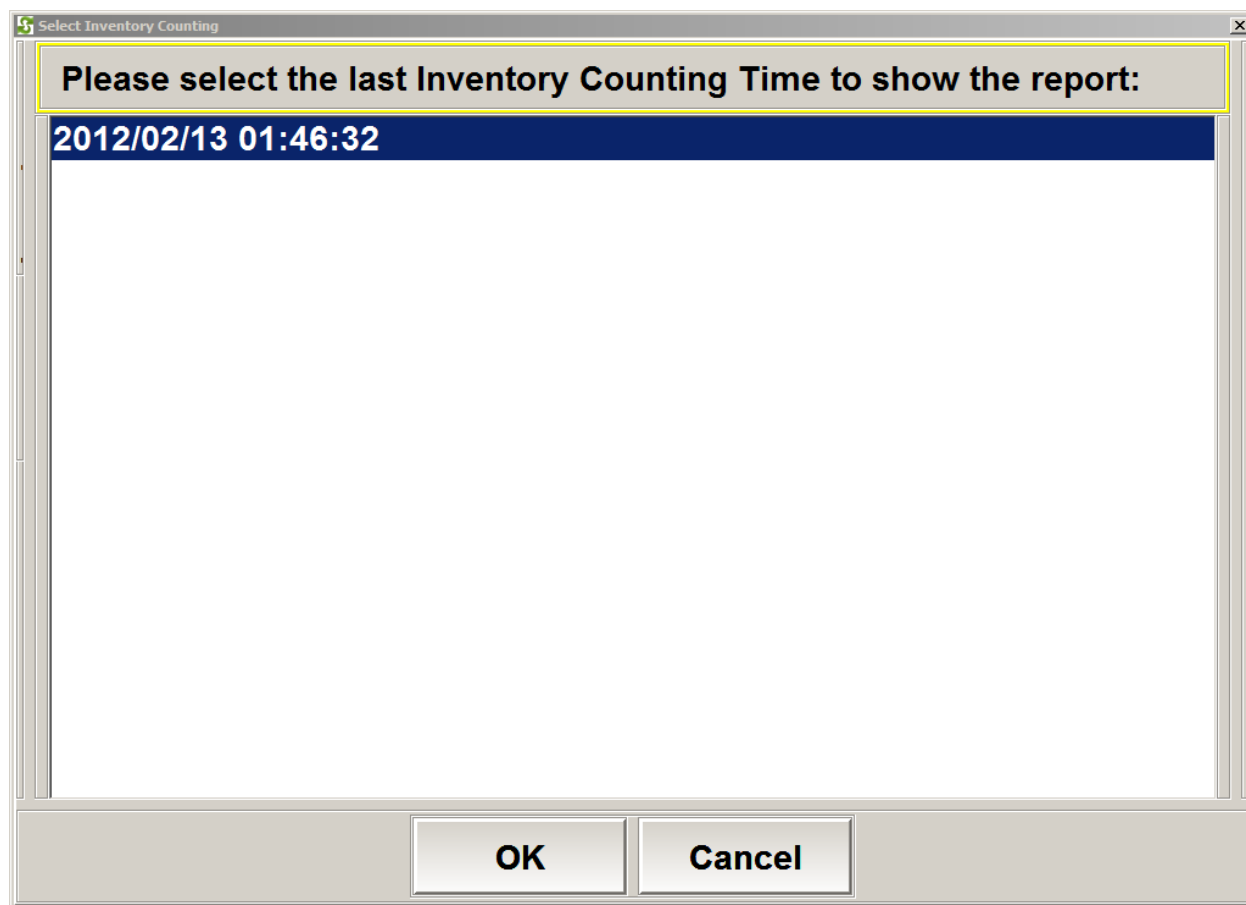
Diet Coke

Kirin

Budlight

Simple Inventory Replenishment lets you track the addition of Items in your inventory since the last counting. You will be able to let system calculate the depletion of inventory and give you the current inventory levels in the Simple Inventory Reconciliation Report:

First, you need to select the time of the inventory counting as the starting point:



The report will show the following elements:

1. The Menu Item Name
2. The Last count of the item at the time you have selected
3. The count of the item from the replenishments since the time of the selected count
4. The count of the item that have been sold since the time of the selected count
5. The expected current count of the item, which equals the following:  
column 2 + column 3 – column 4

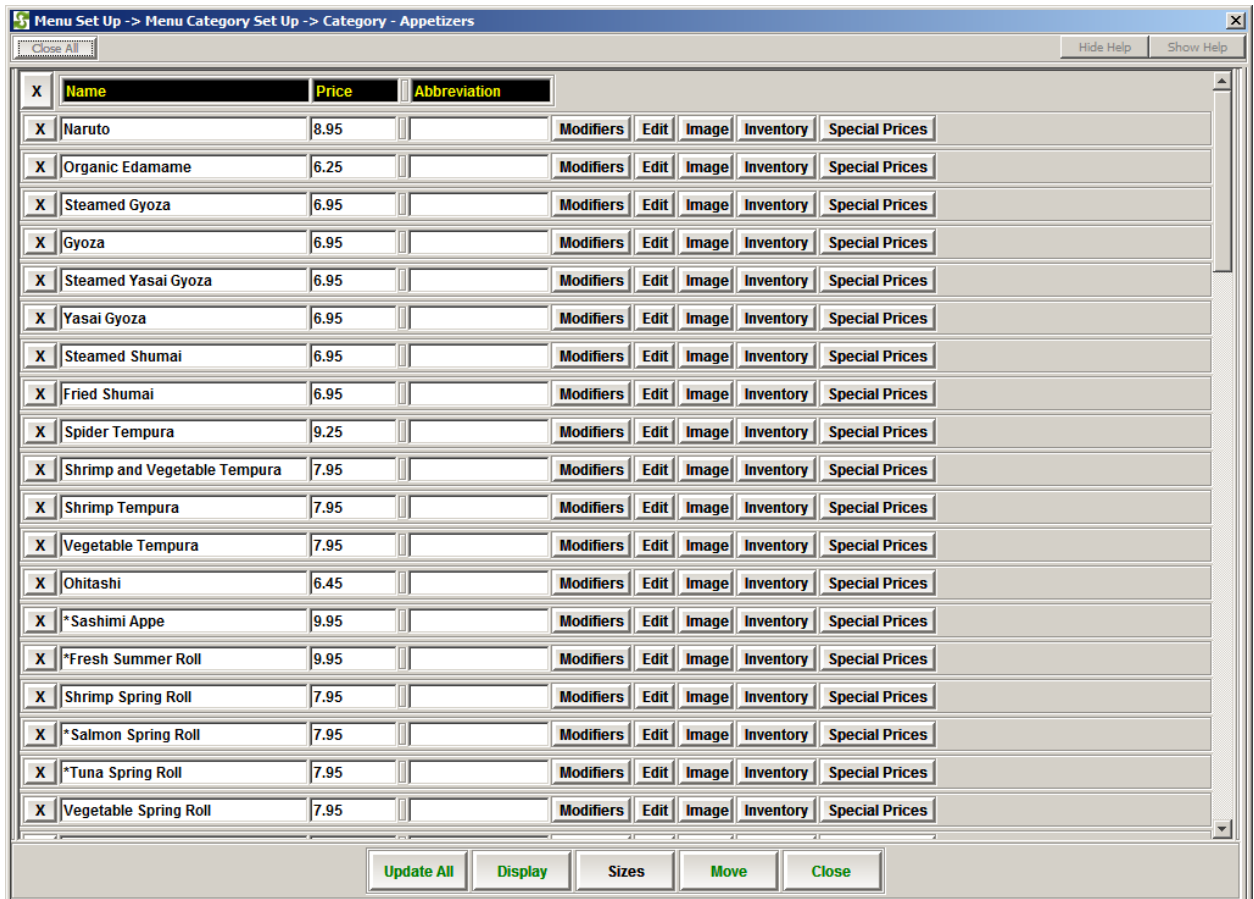
Show Report by

Simple Inventory Reconciliation Report since last Count 2012/02/13 01:46:32				
Item Name	Last Count	Replenishment since Last Count	Sold since Last Count	Expected Current Count
Budweiser	4	2	1	5
Sprite	3	1	1	3

Print      Show as Image      Show as HTML      Show as Excel      Close

**Set Up Low Inventory Alert:**

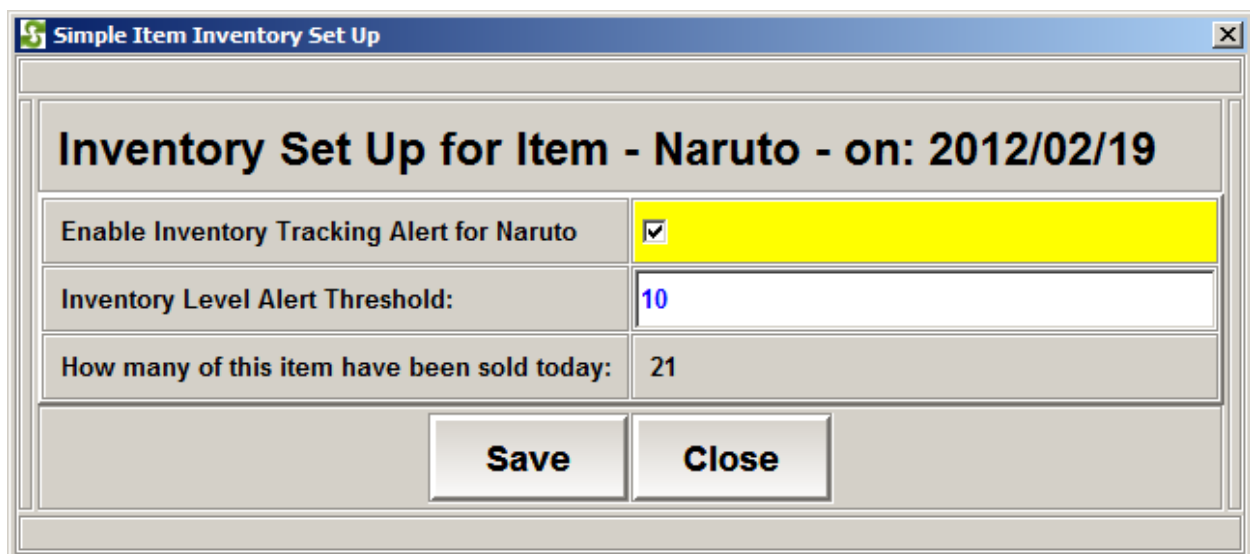
1. Go to All Set Up -> Menu Set Up -> Menu Category Set Up -> Items -> Click on Inventory Button like below:



X	Name	Price	Abbreviation	Modifiers	Edit	Image	Inventory	Special Prices
X	Naruto	8.95		Modifiers	Edit	Image	Inventory	Special Prices
X	Organic Edamame	6.25		Modifiers	Edit	Image	Inventory	Special Prices
X	Steamed Gyoza	6.95		Modifiers	Edit	Image	Inventory	Special Prices
X	Gyoza	6.95		Modifiers	Edit	Image	Inventory	Special Prices
X	Steamed Yasai Gyoza	6.95		Modifiers	Edit	Image	Inventory	Special Prices
X	Yasai Gyoza	6.95		Modifiers	Edit	Image	Inventory	Special Prices
X	Steamed Shumai	6.95		Modifiers	Edit	Image	Inventory	Special Prices
X	Fried Shumai	6.95		Modifiers	Edit	Image	Inventory	Special Prices
X	Spider Tempura	9.25		Modifiers	Edit	Image	Inventory	Special Prices
X	Shrimp and Vegetable Tempura	7.95		Modifiers	Edit	Image	Inventory	Special Prices
X	Shrimp Tempura	7.95		Modifiers	Edit	Image	Inventory	Special Prices
X	Vegetable Tempura	7.95		Modifiers	Edit	Image	Inventory	Special Prices
X	Ohitashi	6.45		Modifiers	Edit	Image	Inventory	Special Prices
X	*Sashimi Appe	9.95		Modifiers	Edit	Image	Inventory	Special Prices
X	*Fresh Summer Roll	9.95		Modifiers	Edit	Image	Inventory	Special Prices
X	Shrimp Spring Roll	7.95		Modifiers	Edit	Image	Inventory	Special Prices
X	*Salmon Spring Roll	7.95		Modifiers	Edit	Image	Inventory	Special Prices
X	*Tuna Spring Roll	7.95		Modifiers	Edit	Image	Inventory	Special Prices
X	Vegetable Spring Roll	7.95		Modifiers	Edit	Image	Inventory	Special Prices

Update All Display Sizes Move Close

2. On the next Screen, enter Inventory Level Alert Threshold for this item, and save.



### Inventory Set Up for Item - Naruto - on: 2012/02/19

Enable Inventory Tracking Alert for Naruto	<input checked="" type="checkbox"/>
Inventory Level Alert Threshold:	10
How many of this item have been sold today:	21

Save Close



When the inventory level falls below the threshold, the warning message will appear when you trying to add the item to an order like below:

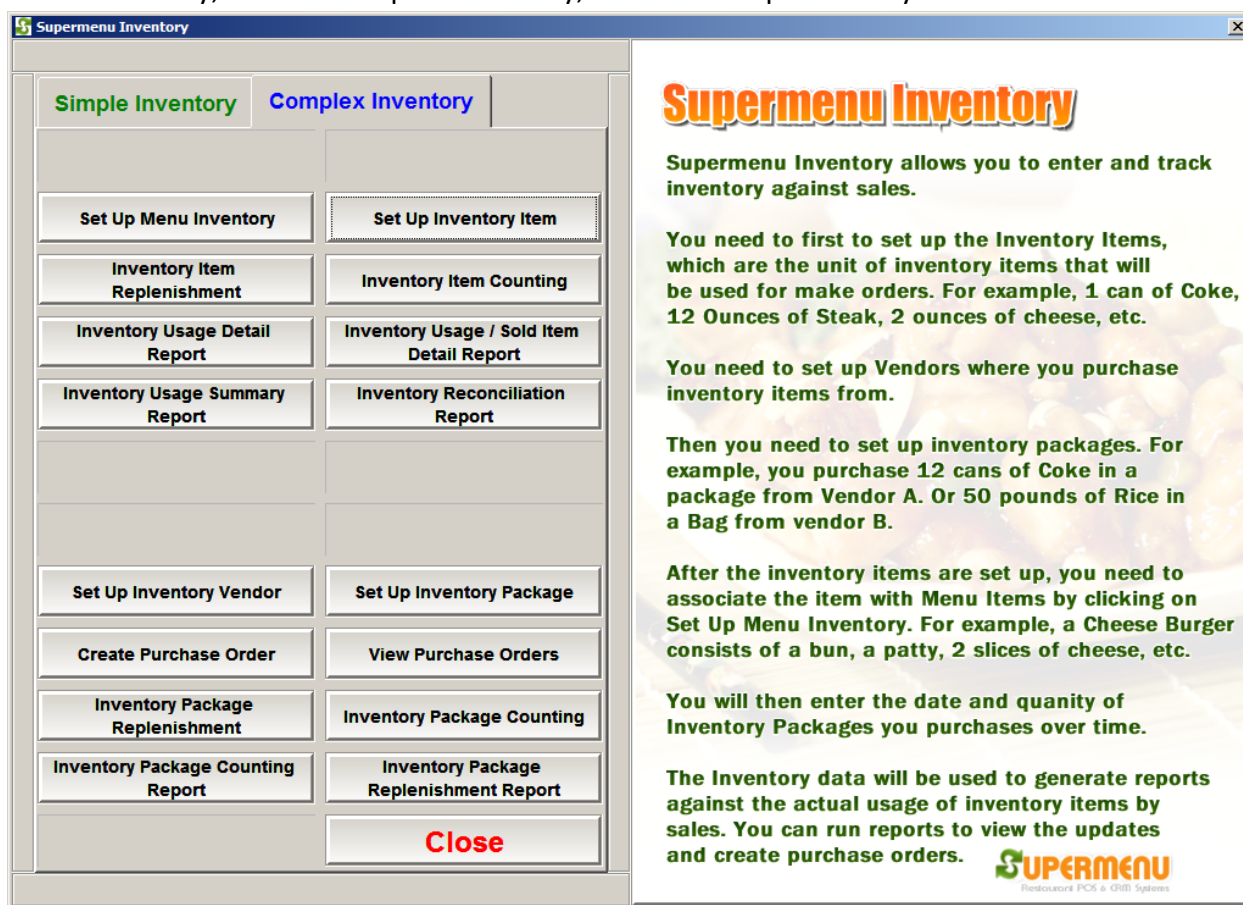
Exit	Timecard	No Sale	Orders	Refresh	Money Drop	Gift & Loyalty	License	Help	Minimize
Carry-Out: Walk-In Customer			Undo						
1 Naruto 8.95									
<div style="border: 1px solid black; padding: 5px; text-align: center;">Inventory Low: Only 9 left.</div>			Appetizers	Naruto	Organic Edamame	Steamed Gyoza	Gyoza		
			Soup and Salad	Steamed Yasai Gyoza	Yasai Gyoza	Steamed Shumai	Fried Shumai		
			Soft Drinks	Spider Tempura	Shrimp and Vegetable Tempura	Shrimp Tempura	Vegetable Tempura		
				Ohitashi	*Sashimi Appe	*Fresh Summer Roll	Shrimp Spring Roll		
				2 or 3 Rolls Special - CASH ONLY	*Salmon Spring Roll	*Tuna Spring Roll	Vegetable Spring Roll	Hotate Kaiyaki	
Defer	Split	Price +/-	For Whom	Modify Item	Other	Seafood Kushi Yaki	Chicken Kushiyaki	Beef Kushiyaki	*Tuna Tataki
Sub Total				\$8.95		*White Tuna Tataki	*Salmon Tataki	*Beef Tataki	Beef Nagima
Adjustment / Discount		(0.00%)		\$0.00					
Tax		(0.00%)		\$0.00					
Total				\$8.95					
Gratuity (Tips)				\$0.00					
Pay	Send	Note	Void	Back	Gift Card	Chicken Nagima	Tori no Karaage		

## Complex Inventory

Complex inventory is used when you want to track the ingredient usage of menu items. You will first set the inventory item (ingredient), such as cheese, beef, chicken, etc. Then you need to specify how many units of inventory items are needed for a menu item. For example, you will specify a cheese pizza needs 6 ounces of cheese, 10 ounces of dough, 2 ounces of sauce, etc.

The following is about how to set up an inventory item:

1. Go to Inventory, click on Complex Inventory, click on Set Up Inventory Item



On the inventory item set up screen, enter the name, unit, group, price and alert level:

Name of Inventory Item	Unit	Group	Price	Alert Level
Cheese	ounce	Diary	1	100 X
				X
				X
				X
				X
				X
				X
				X
				X
				X
				X
				X
				X
				X
				X
				X
				X
				X
				X
				X

The set up Inventory Items for Menu Items, Click on Set Up Menu Inventory, then click Set Up inventory button next to the item:

Set Up Inventory for Food Items

Close All

Hide Help

Show Help

☐ Veggie

**Pizza**

☐ Regular [Tomato & Cheese]

**Pizza Delight**

☐ Bacon Cheeseburger

☐ Mover's BBQ Chicken

☐ Mover's Buffalo Chicken

☐ Mover's Hawaiian

☐ Mover's Meat Lovers

☐ Mover's Milano

☐ Mover's Sampler

☐ Mover's Steak

☐ Mover's Unique

☐ Mover's Vegilicious

**Inventory Menu Item Set Up**

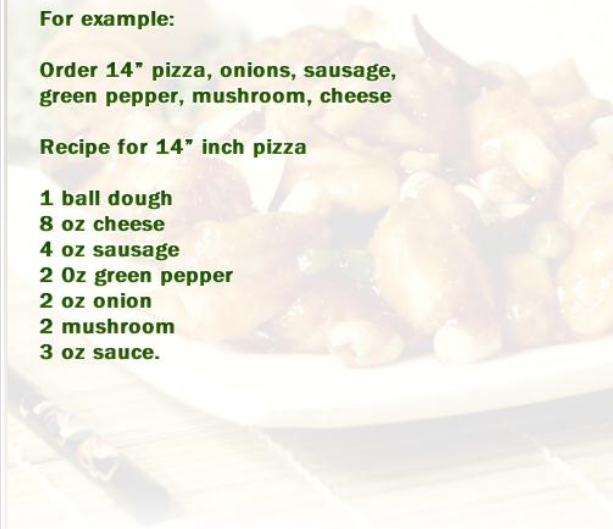
You can set up Inventory Items for each Food Menu Item.


For example:

Order 14" pizza, onions, sausage, green pepper, mushroom, cheese

Recipe for 14" inch pizza

1 ball dough  
8 oz cheese  
4 oz sausage  
2 Oz green pepper  
2 oz onion  
2 mushroom  
3 oz sauce.





On the next screen, enter the number of inventory items for this menu item:

Set Up Inventory for Greek Calzone

Close All

Hide Help

Show Help

Inventory Item	Quantity	For Size	
Cheese (ounce)	2	0	Delete
		0	Delete
		0	Delete
		0	Delete
		0	Delete
		0	Delete
		0	Delete
		0	Delete
		0	Delete
		0	Delete
		0	Delete
		0	Delete
		0	Delete
		0	Delete
		0	Delete
		0	Delete
		0	Delete
		0	Delete
		0	Delete
		0	Delete
		0	Delete
		0	Delete
		0	Delete

Create Inventory Items

Close

Inventory Menu Item Set Up

You can set up Inventory Items for each Food Menu Item.

For example:

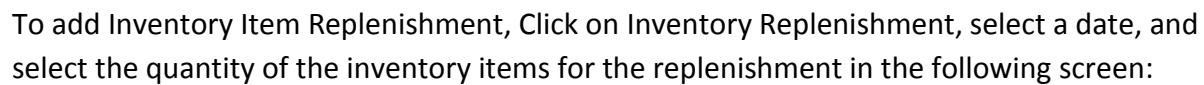
Order 14" pizza, onions, sausage, green pepper, mushroom, cheese

Recipe for 14" inch pizza

1 ball dough  
8 oz cheese  
4 oz sausage  
2 Oz green pepper  
2 oz onion  
2 mushroom  
3 oz sauce.

SUPERMENU

To Count the Inventory Item, click on Inventory Item Count button, select a date and enter the count for the inventory items:



Enter Inventory Item Replenished by Date 2012/02/20

Close All

Hide Help

Show Help

Inventory Item	Quantity	
Cheese (ounce)	100	Delete
		Delete
		Delete
		Delete
		Delete
		Delete
		Delete
		Delete
		Delete
		Delete
		Delete
		Delete
		Delete
		Delete
		Delete
		Delete
		Delete
		Delete
		Delete
		Delete
		Delete

Add more

Set Up Inventory Item

Close

Inventory Menu Item Set Up

You can set up Inventory Items for each Food Menu Item.

For example:

Order 14" pizza, onions, sausage, green pepper, mushroom, cheese

Recipe for 14" inch pizza

- 1 ball dough
- 8 oz cheese
- 4 oz sausage
- 2 Oz green pepper
- 2 oz onion
- 2 mushroom
- 3 oz sauce.

SUPERMENU

To view the inventory reconciliation report, select the date and show the following:

**Select Inventory Item Count Date:**

Select the date of inventory item count for reconciliaton report:

2012/02/20

Show Report Close



Show Report by

Inventory Item Name	Last Count	Replenishment since Last Count	Sold since Last Count	Expected Current Count	Alert Level
Cheese	300.00	100	10	390	100

Print

Show as Image

Show as HTML

Show as Excel

Close